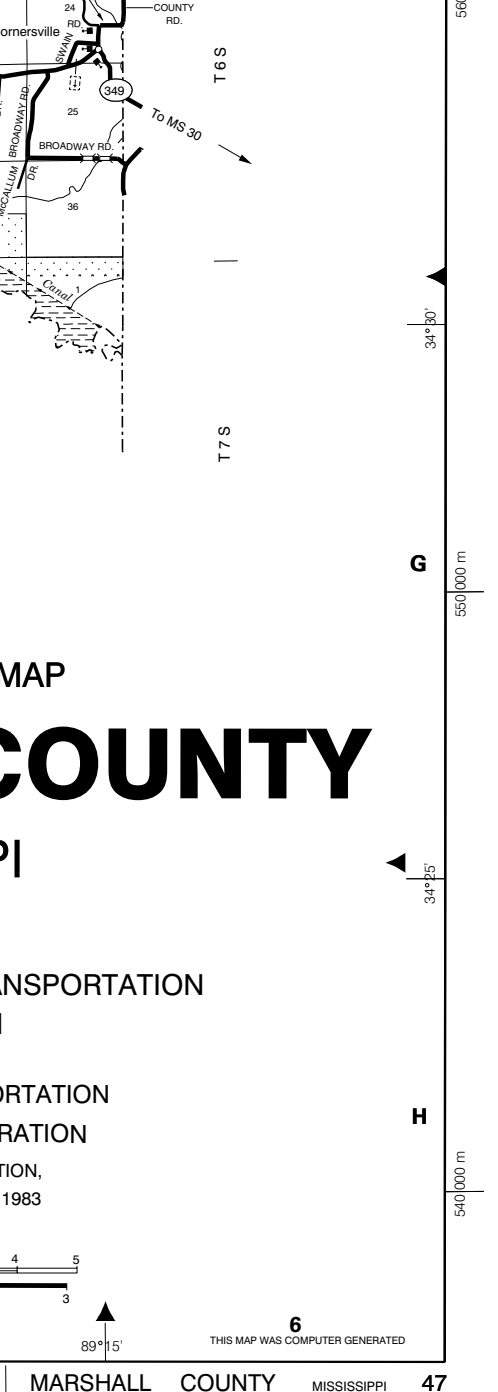
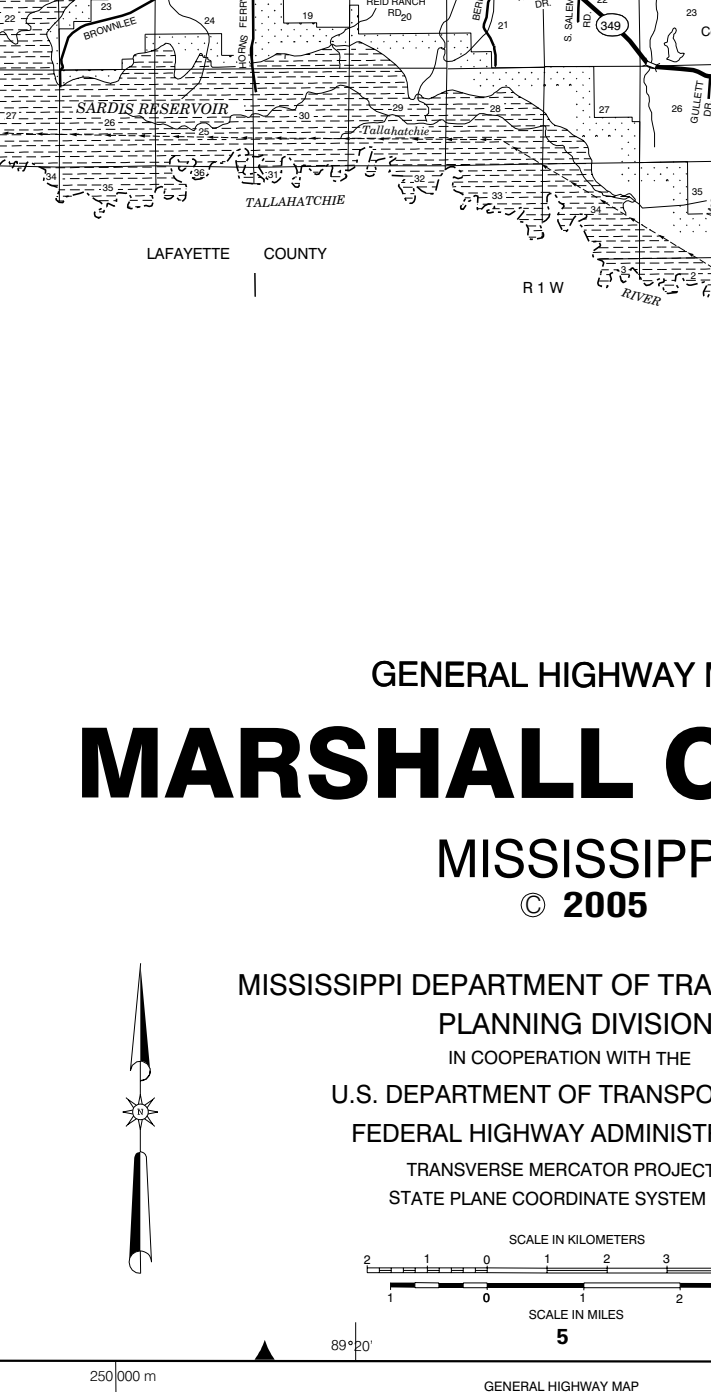
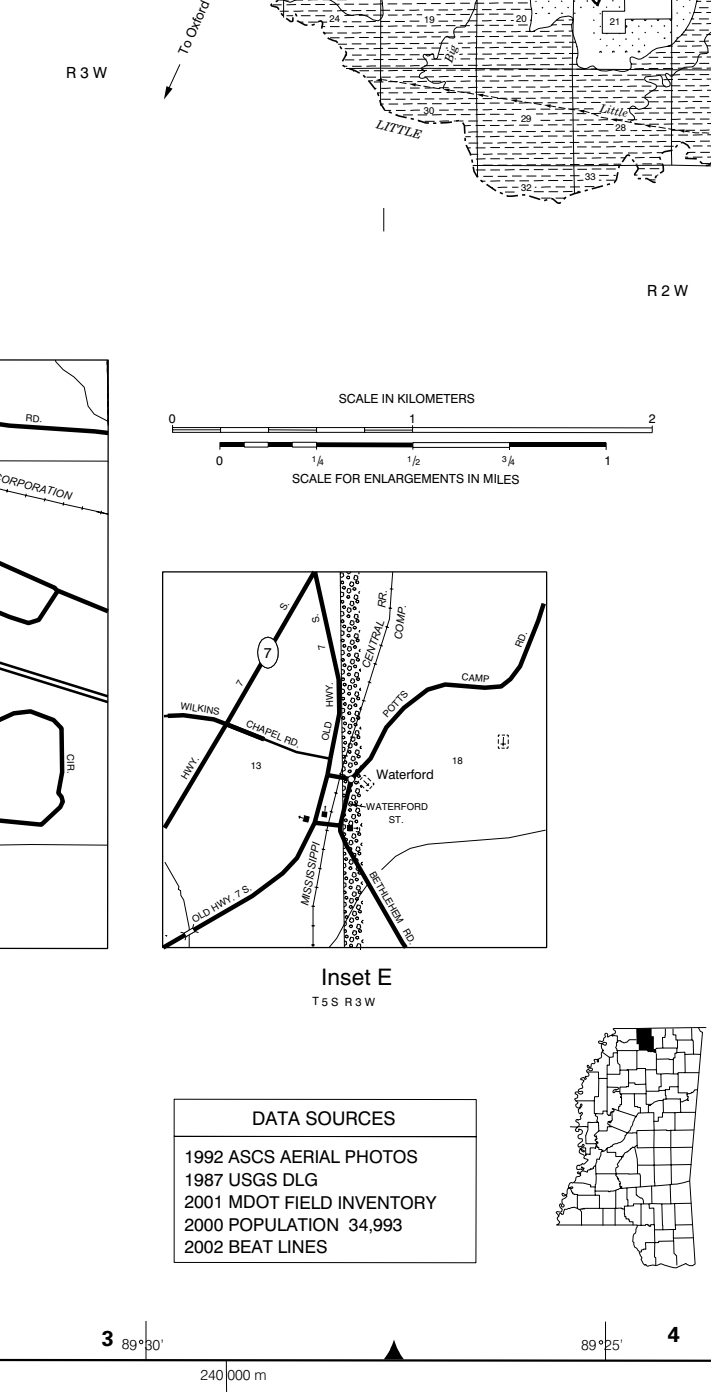
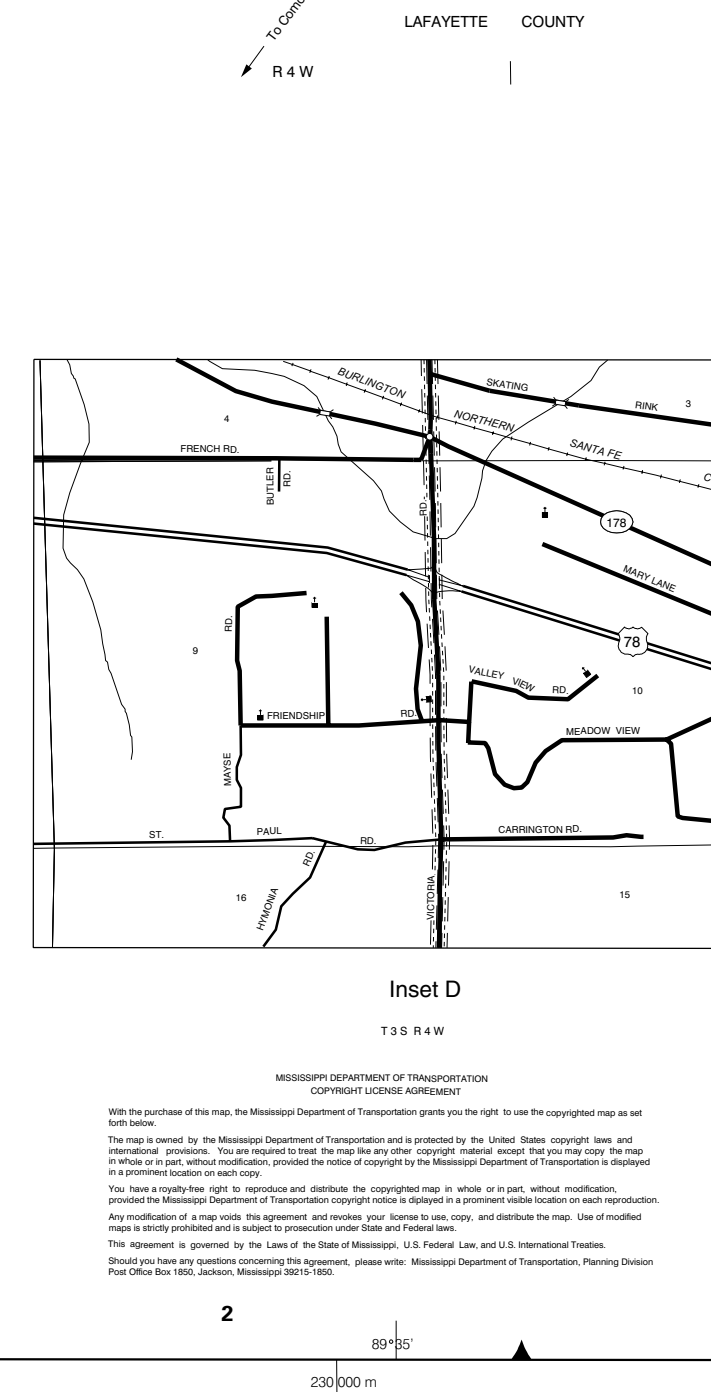
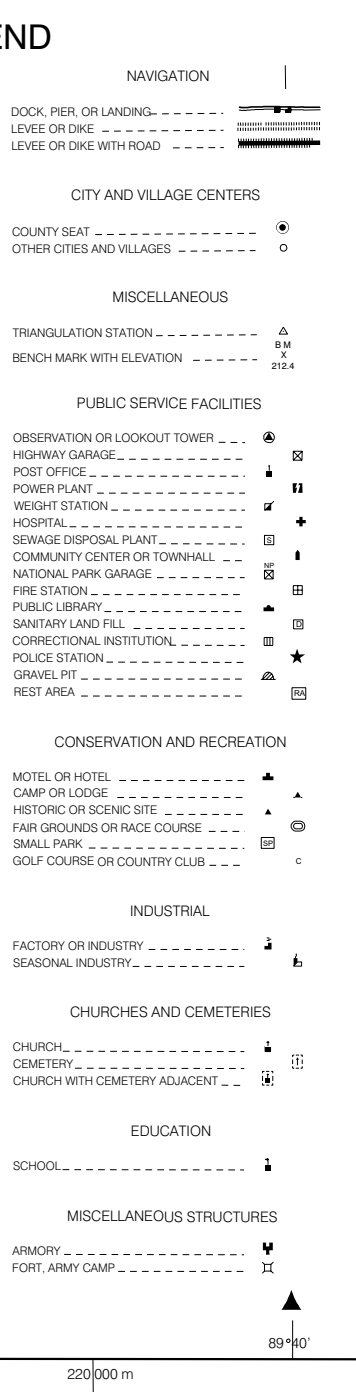


- LEGEND**
- ROADS AND ROADWAY FEATURES**
 - UNIMPROVED ROAD
 - GRAVEL
 - PAVED ROAD
 - UNIMPROVED HIGHWAY
 - DIVIDED HIGHWAY
 - INTERSTATE SYSTEM
 - CITY STREETS
 - HIGHWAY BRIDGES
 - BRIDGE 50 FEET AND OVER
 - DRAWN BRIDGE
 - FERRY (FREE OR TOLL)
 - HIGHWAY GRADE SEPARATION
 - HIGHWAY INTERCHANGE
 - ROAD SYSTEM DESIGNATION
 - INTERSTATE NUMBERED
 - U.S. NUMBERED
 - STATE NUMBERED
 - RAILROADS
 - RAILROAD STATION
 - RAILROAD CROSSING
 - RAILROAD ABOVE
 - RAILROAD BELOW
 - AIRPORTS
 - MILITARY AIRPORT
 - AIRPORT LIMITED FACILITIES
 - LANDING AREA OR STRIP
 - AIRPORT COMPLETE FACILITIES
 - AIRWAY LIGHT BEACON
 - DRAINAGE AND NATURAL FEATURES
 - NARROW STREAM
 - DRAINAGE DITCH
 - LAKES AND RESERVOIRS
 - OVERFLOW LAND
 - MARSH OR SWAMP LAND
 - BOUNDARIES
 - STATE BOUNDARY
 - COUNTY BOUNDARY
 - BEAT LINE
 - CONGRESSIONAL TOWNSHIP BOUNDARY
 - SECTION LINE
 - NATIONAL OR STATE FOREST
 - RESERVATION PARKS ETC.
 - URBAN AREA COMPACT
 - INCORPORATED PLACES
 - UNINCORPORATED DELIMITED AREAS
 - NAVIGATION**
 - DOCK, PIER OR LANDING
 - LEVEE OR DIKE
 - LEVEE OR DIKE WITH ROAD
 - CITY AND VILLAGE CENTERS**
 - COUNTY SEAT
 - OTHER CITIES AND VILLAGES
 - MISCELLANEOUS**
 - TRANSLATION STATION
 - BENCH MARK WITH ELEVATION
 - PUBLIC SERVICE FACILITIES**
 - OBSERVATION OR LOOKOUT TOWER
 - HIGHWAY GARAGE
 - POST OFFICE
 - POWER PLANT
 - WEIGHT STATION
 - HOSPITAL
 - SEWAGE DISPOSAL PLANT
 - COMMUNITY CENTER OR TOWN HALL
 - NATIONAL PARK GARAGE
 - PUBLIC LIBRARY
 - SANITARY LAND FILL
 - CORRECTIONAL INSTITUTION
 - POLICE STATION
 - REST AREA
 - CONSERVATION AND RECREATION**
 - CAMP OR HOTEL
 - CAMP OR LODGE
 - HISTORIC OR SCENIC SITE
 - FAR GROUNDS OR RACE COURSE
 - SMALL PARK
 - GOLF COURSE OR COUNTRY CLUB
 - INDUSTRIAL**
 - FACTORY OR INDUSTRY
 - SEASONAL INDUSTRY
 - CHURCHES AND CEMETERIES**
 - CHURCH
 - CEMETERY
 - CHURCH WITH CEMETERY ADJACENT
 - EDUCATION**
 - SCHOOL
 - MISCELLANEOUS STRUCTURES**
 - ARMORY
 - FORT, ARMY CAMP



GENERAL HIGHWAY MAP
MARSHALL COUNTY
MISSISSIPPI
© 2005

MISSISSIPPI DEPARTMENT OF TRANSPORTATION
PLANNING DIVISION
IN COOPERATION WITH THE
U.S. DEPARTMENT OF TRANSPORTATION
FEDERAL HIGHWAY ADMINISTRATION
TRANSVERSE MERCATOR PROJECTION,
STATE PLANE COORDINATE SYSTEM 1983

DATA SOURCES
1992 ASCS AERIAL PHOTOS
1987 USGS DIG
2001 MDT FIELD INVENTORY
2000 POPULATION 34,993
2002 BEAT LINES

